

When you read your Bible, you might see that some of the words in the New Testament are red. This means that those are words Jesus said.

K-3 Beetle Cards

Some stories appear in the Bible multiple times because it is different people's versions of what they saw happen.

K-3 Beetle Cards

When you are reading your Bible, you might see a little letter beside a word. That letter is directing you to a note at the bottom of the page that will help you understand what you're reading!

K-3 Beetle Cards

There are many different Bibles in the world. That means that the page number of a story in your Bible might be different than the page number of the same story in your parents' Bibles.

K-3 Beetle Cards

The Bible is one big book made up of lots of smaller books. Some of the books are named after the person who wrote them and some are named because of what the book is about.

K-3 Beetle Cards

There are many different versions of the Bible. The versions are written to help people understand the Bible better. This just means that your Bible might not say the same as your friends'!

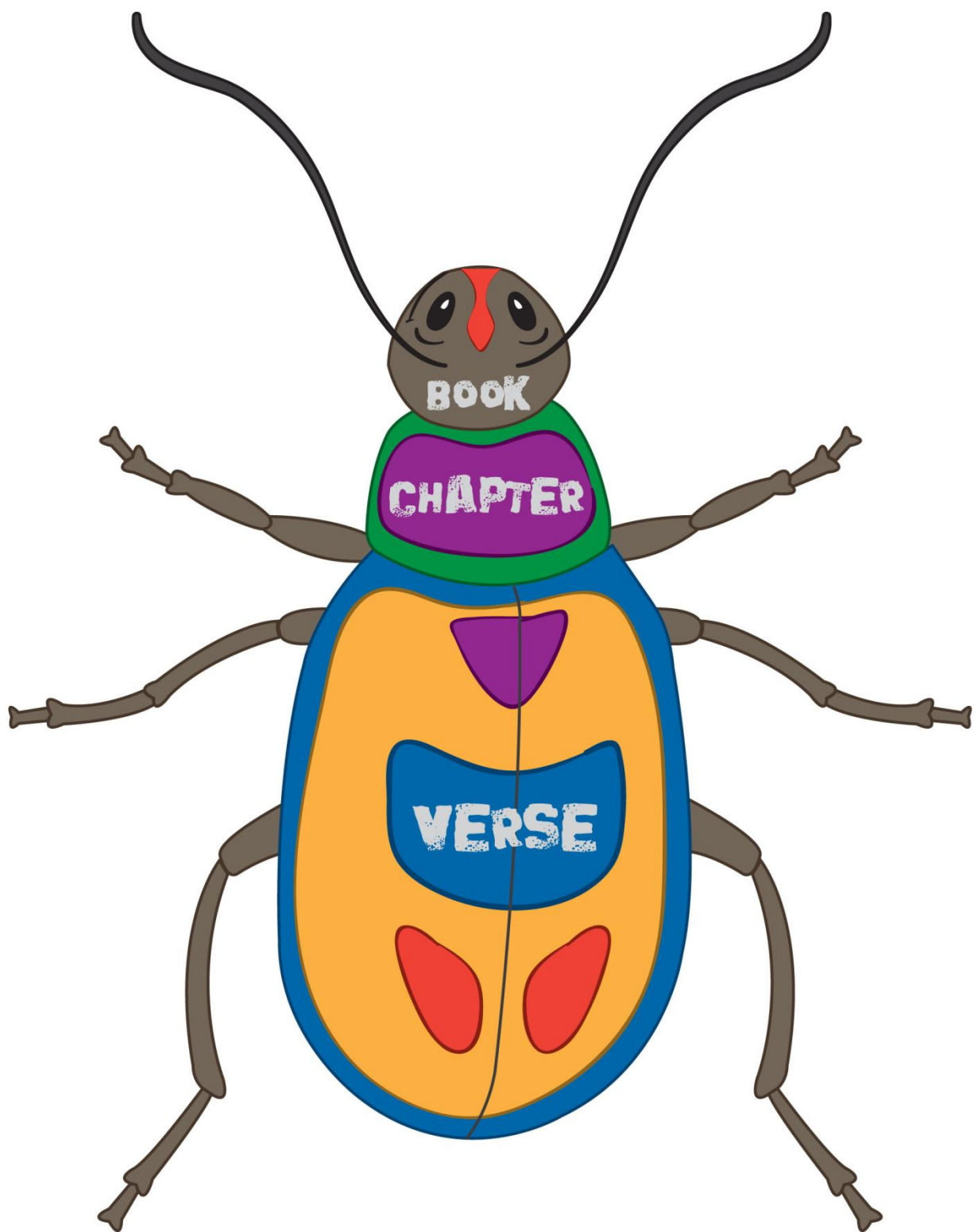
K-3 Beetle Cards

As you are reading the Bible, you might notice that there are bold words before some verses. These headings tell you what that section of verses is going to be about.

K-3 Beetle Cards

The big bold numbers in the Bible are the chapter numbers of each book. The little numbers are the verse numbers. We use these numbers to help us find certain places in the Bible!

K-3 Beetle Cards



A rhino's horn is made of compacted hair.

K-3 Beetle Cards

A crocodile cannot stick its tongue out.

K-3 Beetle Cards

Elephants are the only animals that can't jump.

K-3 Beetle Cards

Tigers have striped skin, not just striped fur.

K-3 Beetle Cards

A zebra is black with white stripes.

K-3 Beetle Cards

The total weight of all the ants in the world is more than the total weight of all the humans in the world.

K-3 Beetle Cards

Hippos can run faster than humans.

K-3 Beetle Cards

Four of the five fastest land animals reside in Africa: the cheetah, the wildebeest, the lion, and the gazelle. All of them can run above 50 miles per hour.

K-3 Beetle Cards

